

INTUMESCENT PIPE COLLAR

(IPC32 - 32mm)



BISSON
THE PIPE FITTINGS EXPERTS

Fire collars are designed to maintain the integrity and the fire resistance level of a building element where building service penetrations pass through. They stop heat, smoke, fire and gas moving between compartments of a building.

In the event of a fire, the plastic pipes will begin to melt. Due to the exposure of heat, the intumescent will expand and with the pressure exerted from the metal shell, the intumescent will seal the hole left behind. This prevents the fire and smoke spreading to the next compartment and reinstates the fire resistance of the wall or floor.

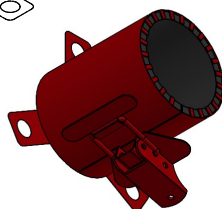
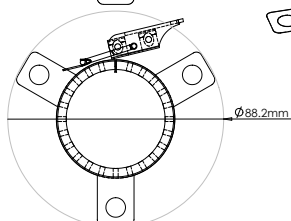
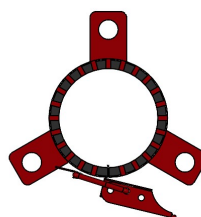
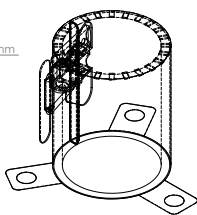
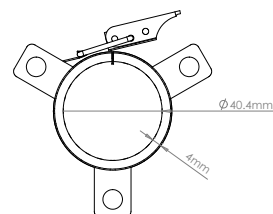
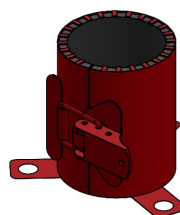
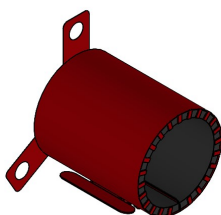
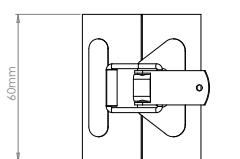
Installation Instructions:

With the collar open, simply place the pipe through. The collar should fit where the pipe penetrates through the separating surface. Then position and close so you can mark the bolt holes to allow you to drill them. Once drilled, you can put the collar back in position and secure by closing the toggle clasp.

PART NO.:
IPC32

MATERIAL:
Steel

COLOUR:
Red



RAW MATERIAL DATA

Condition
Ready for use, steel shell with a graphite material

Shell
Powder coated 1mm steel

Conditioning Procedure
EN 13238:2010

Expansion pressure
65.4 N

Graphite weight
1.4kg/m² per mm thickness

Graphine density
1409kg/m²

Normal expansion time
less than 2 minutes

Minimum expansion temperature
105 °C

Durability
Z₂ intended for use in internal conditions with humidity classes other than Z₁, excluding temperatures below 0°C

Life
Under normal conditions;
30 years +

Storage
May be stored for a long period of time. To be stores in temperatures between 5°C and 30°C

Installation temperature
+5°C to +50°C (sealant)

Colour
White or red shell with anthracite inlay

Material
Steel

